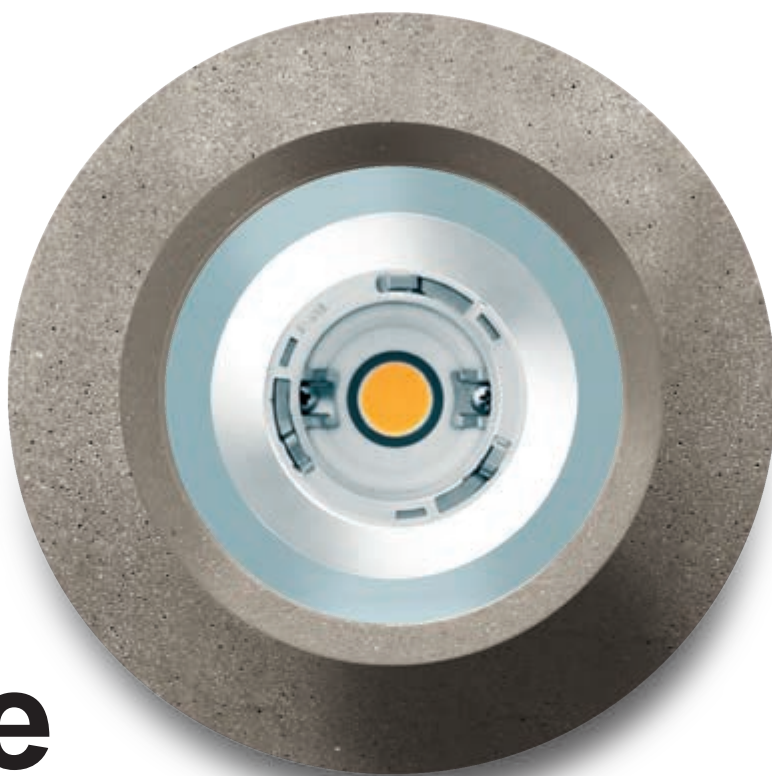




Concrete up-light

The result of continuous research on new technology embraces the essence of LED. Without the need of a recessing box and a limited height the up lighter is the perfect expression of contemporary light. A high performance luminaire in a simple form for easy installation that is able to redefine the concept of ground recessed fixtures.



www.simes.it/concrete-uplight



Concrete surface mounted up-light

Concrete covering with added synthetic fibers with high mechanical strength.
Die cast EN AB-47100 aluminium (low copper content) housing with high corrosion resistance.
Toughened glass diffuser.
Stainless steel screws.
Hard wired with 3m H07RN-F cable.
Silicone gaskets.
Supplied with ground fixing base.

Protection class

IP67

Isolation class

CLASS I ⊕

Mechanical resistance of glass

IK 06

LED versions supplied with LED circuit and power supply.

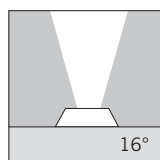
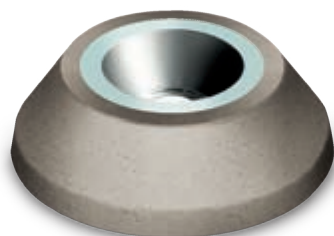
This luminaire contains built-in LED modules with energy class:

A > A+ A++

Colours:

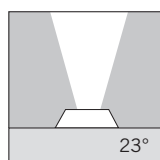
● Concrete (cod. 35)

For updated data, see technical sheets and installation instructions available on our website (www.simes.com).



C.8150W.35

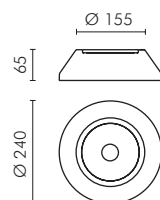
With COB led white 3000K CRI83 800lm
Rated luminaire luminous flux 650lm
Rated input power 13W 240V



C.8155W.35

With COB led white 3000K CRI83 2000lm
Rated luminaire luminous flux 1700lm
Rated input power 26,2W 240V

Ta 20°C



Ground stake accessory for garden installation



S.3524

STAKE in polypropilene.
Colour: black (code 09)
Length 270 mm