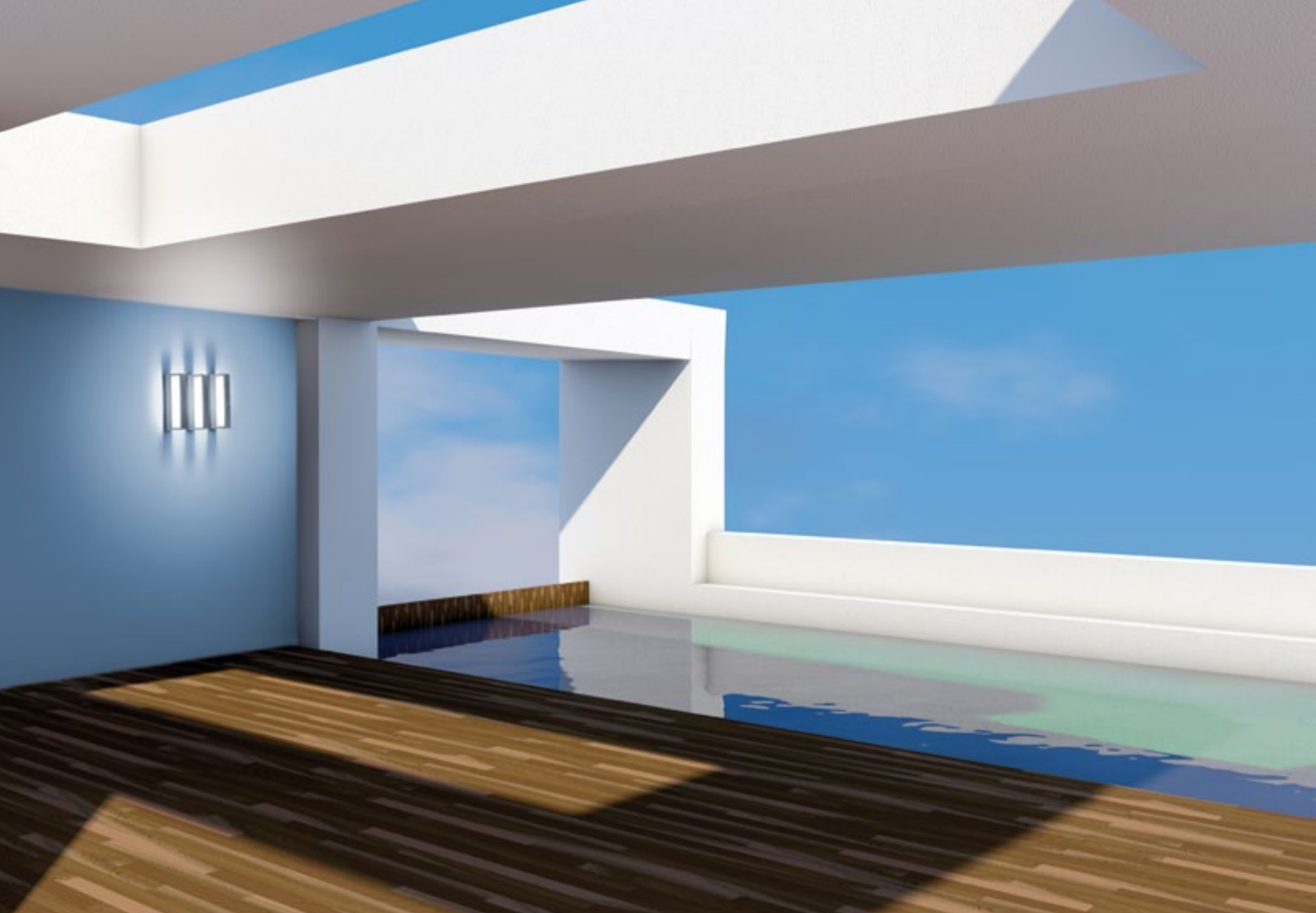




# COOL



[www.simes.it/cool](http://www.simes.it/cool)



## COOL

surface mounted lighting for wall, ceiling and bollard

Die-cast EN AB-47100 aluminium (low copper content) housing with high corrosion resistance.  
 Extruded EN AW-6060 aluminium structure (bollard version) with high corrosion resistance.  
 Toughened glass diffuser.  
 Stainless steel screws.  
 MINI-COOL L 220mm hard wired with HO7RN-F cable and fast connector IP68 included.  
 COOL L 290mm is supplied with single cable entry.  
 Silicone gaskets.  
**Double powdered paint** in 3 step process:  
 \_ surface treatment containing ceramic nano particles (Bonderite);  
 \_ epoxy primer paint;  
 \_ polyester powder paint with high resistance against UV rays and harsh weather conditions.



### Colours:

- White (code 01)
- Aluminium grey (code 14)

### Protection class

IP54

### Isolation class

CLASS II  MINI-COOL L 220mm  
 CLASS I  COOL L 290mm

### Mechanical resistance of glass

IK 06



Luminaires supplied with LED circuit board.

This luminaire contains built-in LED modules with energy class:

**A** **A+** **A++**

The LED modules cannot be changed in the luminaire (Regulation UE 874/2012).

*For updated data, see technical sheets and installation instructions available on our website ([www.simes.com](http://www.simes.com)).*

## Accessories



**S.7249**

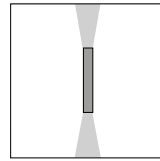
**FLANGE FOR MINI-COOL BOLLARD**  
 Steel flange with stainless steel screws (to be buried in concrete).



**S.7269**

**FLANGE FOR COOL BOLLARD**  
 Steel flange with stainless steel screws (to be buried in concrete).

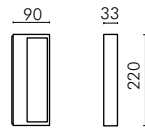
## MINI-COOL APPLIQUE 220mm



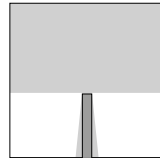
**S.7231W**



With leds white 3000K CRI90 1153lm  
 Rated luminaire luminous flux 519lm  
 Rated input power 13,5W 240V



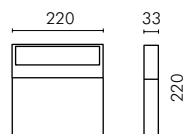
## MINI-COOL BOLLARD H = 220 mm



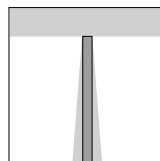
**S.7236W**



With leds white 3000K CRI90 1153lm  
 Rated luminaire luminous flux 519lm  
 Rated input power 13,5W 240V



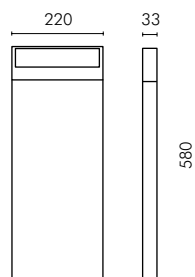
## MINI-COOL BOLLARD H = 580 mm



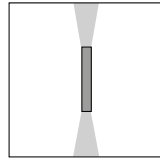
**S.7241W**



With leds white 3000K CRI90 1153lm  
 Rated luminaire luminous flux 519lm  
 Rated input power 13,5W 240V



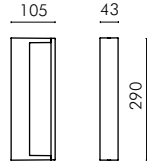
COOL APPLIQUE 290mm



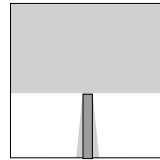
**S.7270W**



With leds white 3000K CRI90 2016lm  
 Rated luminaire luminous flux 1034lm  
 Rated input power 24W 240V



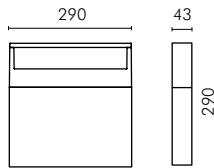
COOL BOLLARD H = 290 mm



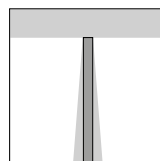
**S.7245W**



With leds white 3000K CRI90 2016lm  
 Rated luminaire luminous flux 1034lm  
 Rated input power 24W 240V



COOL BOLLARD H = 580 mm



**S.7246W**



With leds white 3000K CRI90 2016lm  
 Rated luminaire luminous flux 1034lm  
 Rated input power 24W 240V

