

MOVIT



design K.Begasse



www.simes.it/movit



MOVIT

Adjustable projector for wall, ceiling, pole and spike

Die-cast EN AB-47100 aluminium (low copper content) housing with high corrosion resistance.
 Extruded EN AW-6060 aluminium structure (arm version) with high corrosion resistance.
 Stainless steel screws.
 Clear toughened glass diffuser.
 HI-GRADE aluminium reflectors.
 MOVIT RECT. and SQUARE 220mm supplied with a 1,5m pre-wired H05RN-F cable.
 MOVIT SQUARE 320mm supplied with fast connector.
 Silicone gaskets.
Double powdered paint in 3 step process:
 _ surface treatment containing ceramic nano particles (Bonderite);
 _ epoxy primer paint;
 _ polyester powder paint with high resistance against UV rays and harsh weather conditions.

Colours:

- White (code 01)
- Aluminium grey (code 14)

Protection class

IP65

Isolation class

CLASS I ⚡

Mechanical resistance of glass

IK 09

IK 10 SQUARE 320mm



Luminaires supplied with LED circuit board and power supply.

This luminaire contains built-in LED modules with energy class:

A A+ A++

The LED modules cannot be changed in the luminaire (Regulation UE 874/2012).

For updated data, see technical sheets and installation instructions available on our website (www.simes.com).

Accessories

S.3049

ACCESSORY STAKE FOR MOVIT SQUARE 220mm and MOVIT RECTANGULAR 130mm

In polypropilene
 Colour: black (code .09)



S.3079

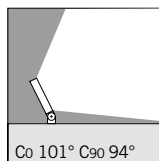
ACCESSORY STAKE FOR MOVIT SQUARE 320mm

In polypropilene
 Colour: black (code .09)





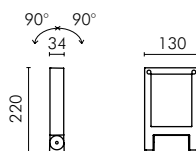
MOVIT RECTANGULAR SYMMETRIC OPTIC



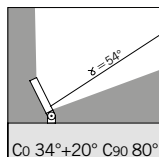
S.3005W



With leds white 3000K CRI90 1008lm
With symetric reflector
Rated luminaire luminous flux 797lm
Rated input power 12,5W 240V



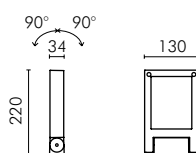
MOVIT RECTANGULAR ASYMMETRIC OPTIC



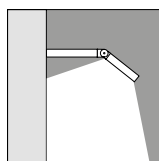
S.3000W



With leds white 3000K CRI90 1008lm
With asymeric reflector
Rated luminaire luminous flux 723lm
Rated input power 12,5W 240V



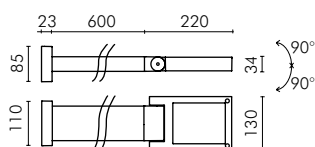
MOVIT RECTANGULAR WITH ARM



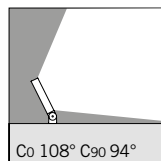
S.3010W



With leds white 3000K CRI90 1008lm
Rated luminaire luminous flux 797lm
Rated input power 12,5W 240V



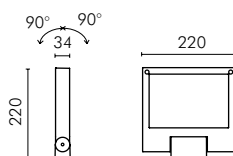
MOVIT SQUARE SYMMETRIC OPTIC



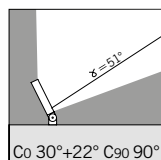
S.3055W



With leds white 3000K CRI90 2016lm
With symmetric reflector
Rated luminaire luminous flux 1477lm
Rated input power 25W 240V



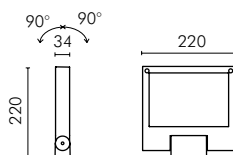
MOVIT SQUARE ASYMMETRIC OPTIC



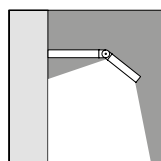
S.3050W



With leds white 3000K CRI90 2016lm
With asymmetric reflector
Rated luminaire luminous flux 1370lm
Rated input power 25W 240V



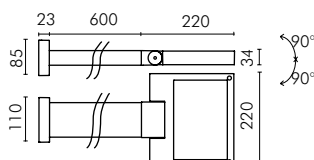
MOVIT SQUARE WITH ARM



S.3060W

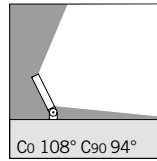


With leds white 3000K CRI90 2016lm
Rated luminaire luminous flux 1477lm
Rated input power 25W 240V





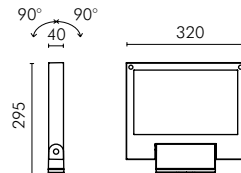
MOVIT SQUARE SYMMETRIC OPTIC



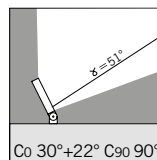
S.3075W



With leds white 3000K CRI90 4536lm
With symetric reflector
Rated luminaire luminous flux 3683lm
Rated input power 45,5W 240V



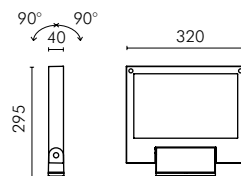
MOVIT SQUARE ASYMMETRIC OPTIC



S.3070W



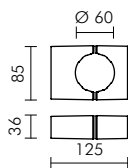
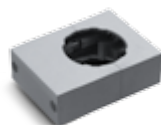
With leds white 3000K CRI90 4536lm
With asymeric reflector
Rated luminaire luminous flux 2990lm
Rated input power 45,5W 240V



MOVIT POLE MOUNTED

SIMES

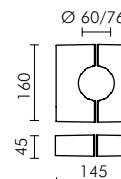
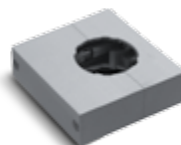
MOVIT RECTANGULAR, MOVIT SQUARE 220mm and MOVIT SQUARE 320mm can be installed on the pole using the fixation accessory.



S.3046

**ACCESSORY SINGLE
POLE MOUNTED Ø60mm**

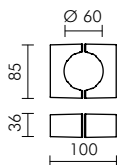
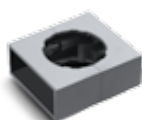
For 1 MOVIT RECTANGULAR 130mm
or for 1 MOVIT SQUARE 220mm



S.3044

**ACCESSORY SINGLE
POLE MOUNTED Ø60/76mm**

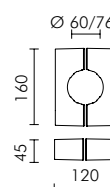
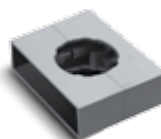
For 1 MOVIT SQUARE 320mm



S.3047

**ACCESSORY DOUBLE
POLE MOUNTED Ø60mm**

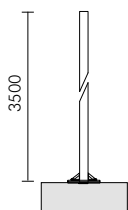
For 2 MOVIT RECTANGULAR 130mm
or for 2 MOVIT SQUARE 220mm



S.3045

**ACCESSORY DOUBLE
POLE MOUNTED Ø60/76mm**

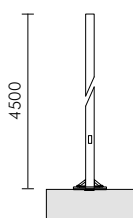
For 2 MOVIT SQUARE 320mm



S.2843

Ø60mm CYLINDRICAL POLE WITH BASE

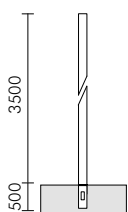
Pole total height 3,5m



S.2845

Ø76mm CYLINDRICAL POLE WITH BASE

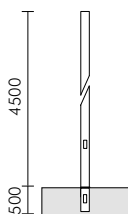
Pole total height 4,5m
Provided with inspection door



S.2842

Ø60mm CYLINDRICAL POLE TO BE BURIED

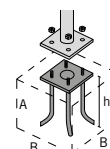
Pole total height 4,0m
To be buried for 0,5m



S.2844

Ø76mm CYLINDRICAL POLE TO BE BURIED

Pole total height 5,0m
To be buried for 0,5m
Provided with inspection door



S.2849

PLANTED ROOT FOR S.2843 / S.2845

h=470mm and bolts in galvanized steel with M16 threads.

Suggested reinforced concrete footstall dimension **: A=0.7m B=0.7m

** Footstall dimension can be calculated according to your country norms and ground properties.

