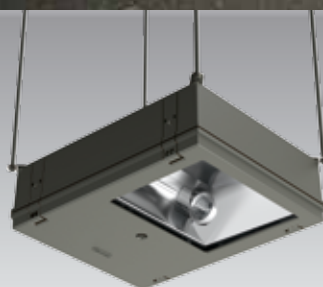
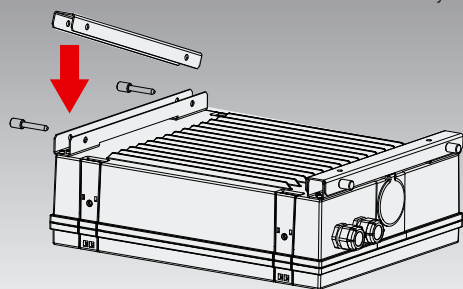
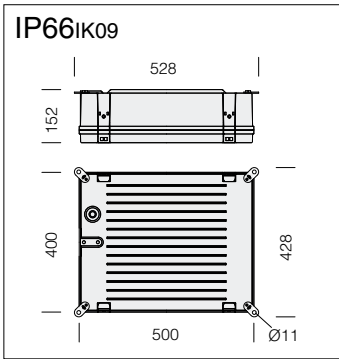


On request: version with bracket for installation on a raceway.





Housing: in die-cast aluminium with latch.

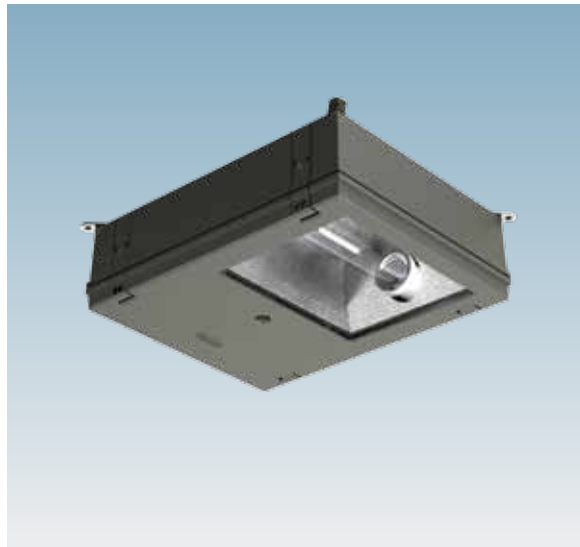
Reflector: In anodised, hammered, pressed 99.85 aluminium.

Diffuser: tempered glass, 4 mm thick, resistant to thermal shock and impact (UNI En 12150-1/2001).

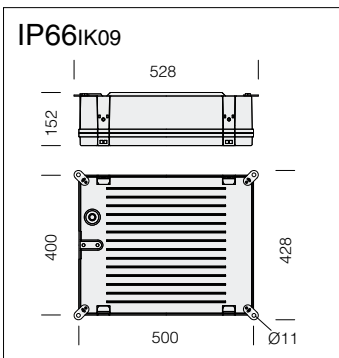
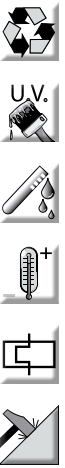
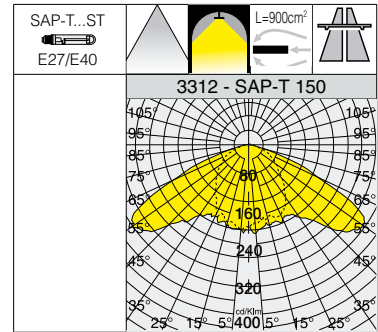
Coating: multi-stage process. Stage 1: grey epoxy cationic electrocoating, resistant to corrosion and saline environments. Stage 2: UV-stabilising priming. Stage 3: gray graphite acrylic finishing.

Equipment: during maintenance the cover remains locked which prevent accidental closure. Wiring on removable tray.

Available upon request: the articles can be supplied with a remote control system. Socket pin connector.



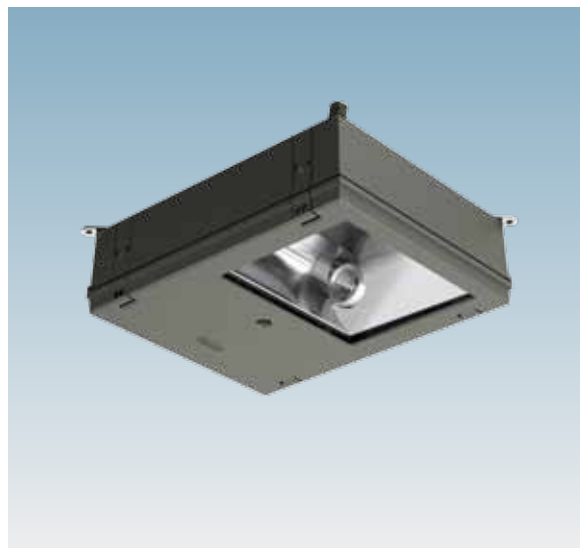
| 3312 Pordoi - symmetric | | | |
|-------------------------|----------|--------|-----------|
| | | CNR | |
| wattage | colour | weight | code |
| SAP-T 70 | graphite | 10.00 | 328140-00 |
| SAP-T 100 | graphite | 10.50 | 328141-00 |
| SAP-T 150 | graphite | 11.50 | 328142-00 |
| SAP-T 250 | graphite | 12.50 | 328143-00 |
| SAP-T 400 | graphite | 13.00 | 328144-00 |



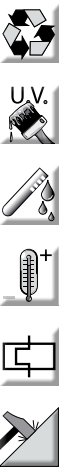
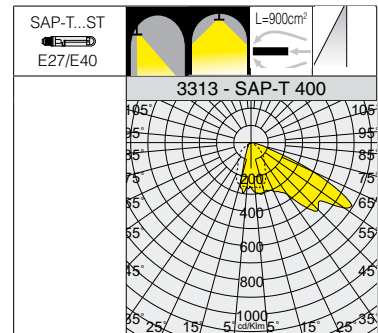
Reflector: LIGHT POLLUTION-CONTROL LOUVRE.

In anodised, polished, pressed 99.90 aluminium.

On request: socket pin connector.



| 3313 Pordoi - counter-flow | | | |
|----------------------------|----------|--------|-----------|
| | | CNR | |
| wattage | colour | weight | code |
| SAP-T 150 | graphite | 11.50 | 328110-00 |
| SAP-T 250 | graphite | 12.50 | 328111-00 |
| SAP-T 400 | graphite | 13.00 | 328112-00 |



COUNTER-FLOW LIGHTING

In the counter-flow lighting technique, the lighting fixture is aimed in the direction opposite to the flow of traffic. This helps observers to perceive the objects on the roadway as vividly highlighted against the background. Additionally, aiming the lighting fixture mostly towards observers results in higher luminous efficacy on the roadway.