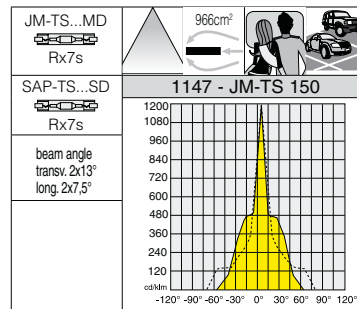
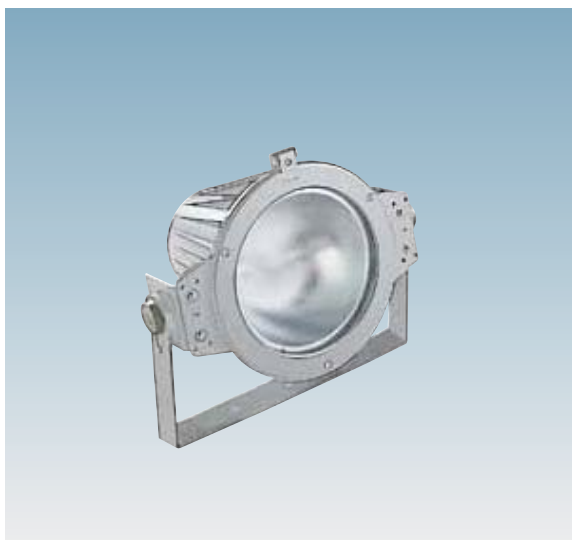


Housing/Frame: die-cast aluminium with cooling fins.

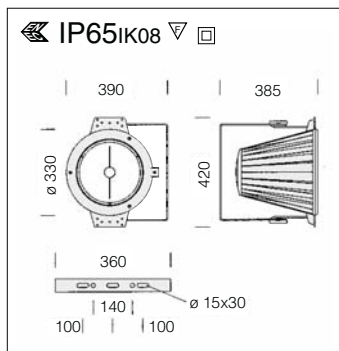
Reflector: wide beam aluminium 99.85, anodised 3µ and polished.

Diffuser: tempered glass protection surface, 5 mm thick, resistant to impact and thermal shock.

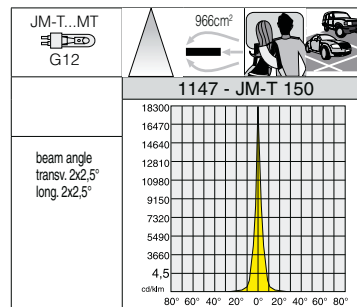
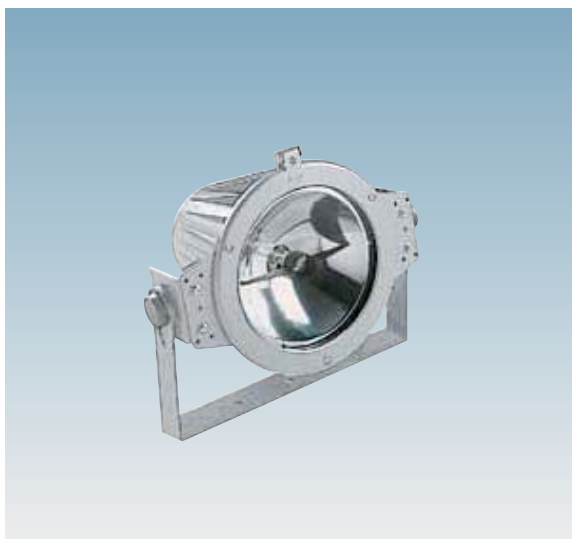
Coating: in several stages. First stage: black epoxy cationic electrocoating after a phosphochromate treatment, resistant to corrosive and saline environments. Second stage: UV stabilising priming; final stage: rough finish with frosted silver acrylic paint.



1147 Star - wide beam				
		CNRL		Lamps (Ta=25°C)
wattage	colour	weight	code	Kelvin - olm - Ra
JM-TS 250	s. silver	12.20	412826-00	3000K - 20000 lm - Ra>80
SAP-TS 150	s. silver	10.50	412827-00	2000K - 15000 lm - Ra 40
JM-TS 150	s. silver	10.50	412828-00	3000K - 11700 lm - Ra>80



Reflector: narrow beam aluminium 99.85, anodised 3µ and polished.

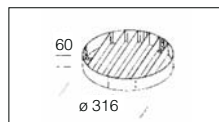
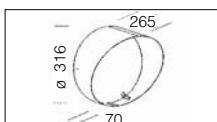


acc. 134 coloured filter	
blue	990001-00
red	990002-00
green	990003-00
yellow	990004-00

Coloured glass to create special light effects. For JM-T150-1147 version only.

1147 Star - narrow beam				
		CNRL		Lamps (Ta=25°C)
wattage	colour	weight	code	Kelvin - olm - Ra
JM-T 150	s. silver	10.60	412825-00	4200K - 13000lm - Ra>90

acc. 147 conveyor	
black	995735-00
Made of steel. Used for conveying the light beam in a single direction.	



acc. 148 baffle louver	
black	995736-00
Made of steel. To reduce glare and improve light control.	